

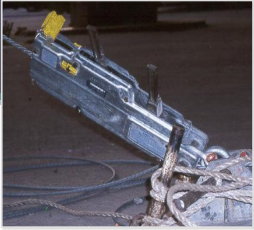
Heavy Rescue II Basic Rigging

1

Moving Devices

2

Griphoist



MODELS IN USE
TU-32
TU-28

3

Griphoist

MODEL	TU-28	TU-32
MAX LOAD	4,000 LBS	8,000 LBS
WIRE ROPE DIA.	7/16	5/8
WIRE ROPE LENGTH	60 FT	30 FT

4

Griphoist



- QUICK SET UP
- PULL OR LOWER A LOAD
- CAN BE USED WITH PULLEYS FOR A MECANICAL ADVANTAGE
- CAN BE USED IN VERTICAL OR HORIZONTAL

5

Griphoist Disadvantages



- WIRE ROPE KINKS
- OPERATES SLOW UNDER LOAD
- LIMITED LENGTHS OF WIRE ROPE

6

Chain Hoist

- 3 Ton Manual Chain Hoist
 - Short Lifts
 - One Man Operation
 - NO Cheater Bars



7

Wire Rope Hoist

- 1.5 Ton Manual Wire Rope Hoist
 - Built in 2:1
 - One Man Operation
 - NO Cheater Bars



8


Rigging Attachments

9

Slings

Can be Nylon, Polyester, Nomex, Kevlar, etc.

- Eye to eye
- Twist Eye




10

Slings

<ul style="list-style-type: none"> • Advantages • Form fitting • Less damaging 	<ul style="list-style-type: none"> • Disadvantages • Heat sensitive • Cutting problem
---	--

11

Slings



12

Slings



13

Wire Rope

Basic Features

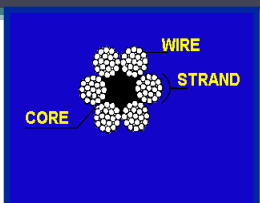
- Number of Strands in the Rope
- Number of Wires in the Strand
- Grade of the Steel
- Type of Core



14

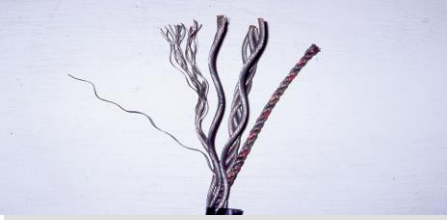
Wire Rope

Is composed of a number of wire strands around a central axis



15

Wire Rope



Generally speaking the more wires in the rope the greater the flexibility

16

Wire Rope Slings



- Avoid - Sharp bends and cutting edges
- Avoid - Over - loading
- Avoid - Sudden jerks when lifting

17

Chain

Grades of Chain

- Grade 3 - Proof Coil
- Grade 4 - High Test
- Grade 7 - Transport
- Grade 8 - Alloy
- Grade 10 - Alloy

18

Chain

Grades of Chain

Never use a chain unless it is marked with the Grade and Capacity.

For overhead lifting use only
Grade 8 - Alloy or Grade 10 - Alloy

19

Chain

Advantages of Chain

Can withstand rough handling
More resistant to corrosion and abrasion than wire rope
Will not kink
Ability to make sharp bends

20

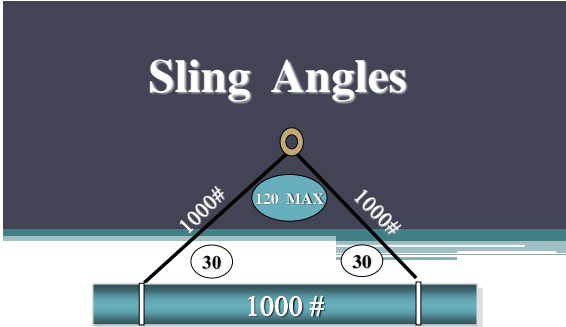
Chain Inspection

Check for:
Twisting 

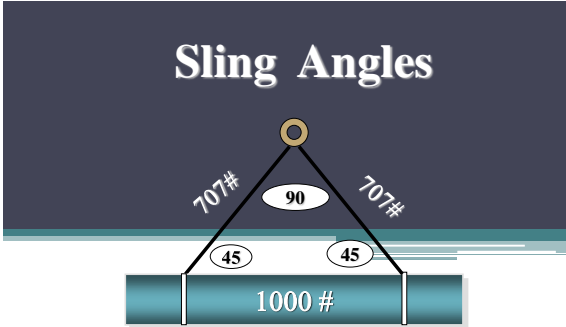
Elongation
If more than 3% discard 

Physical Damage such as wear 

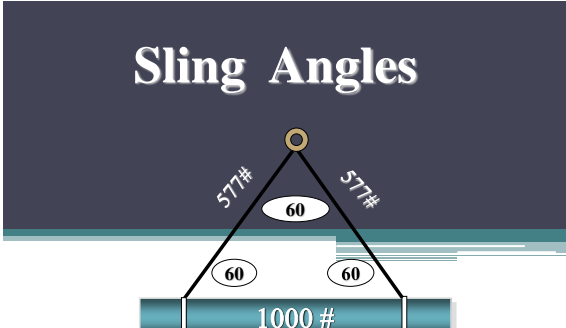
21



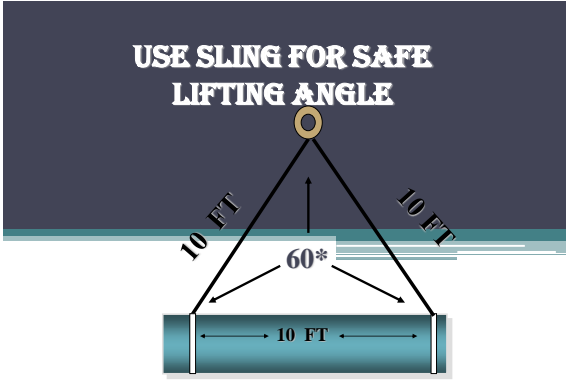
23



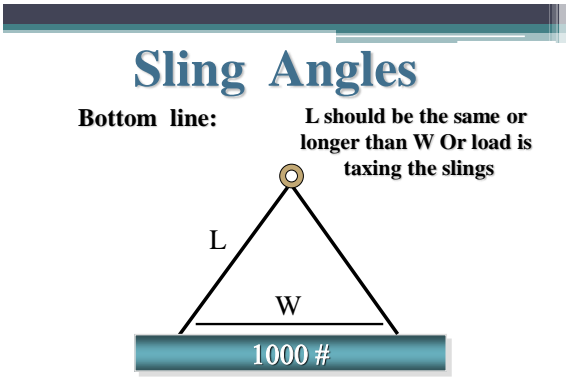
24



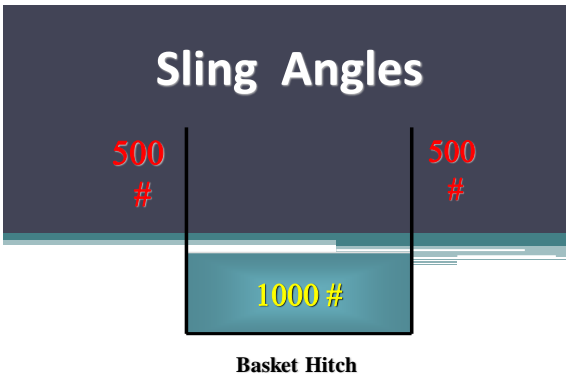
25



26



27



28

Shackles

Types

There are two main types of shackles used in rigging

- Bow Type - aka - Anchor
- Chain Type - aka - "D"

29

Shackles


Never allow a shackle to be pulled at an angle. This greatly reduces it's load capacity.

30

Shackles

Types

Bow Type - aka - Anchor



31

Shackles

Types

A variation of the anchor shackle is the Sling -Saver. It is made for flat synthetic slings



32

Hooks

Strength of Eye Hooks

The load capacity of a hook is determined by the diameter of the eye



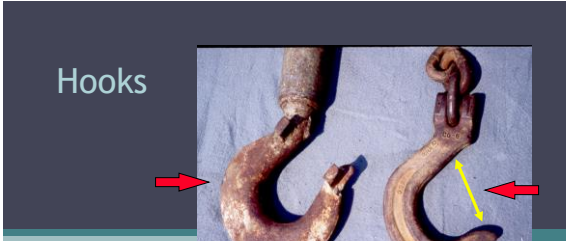
33

Hooks

Safety Concerns

- When rigging a load - Hooks point out
- Critical loads should be moused
- Use a shackle when more than 2 slings are placed on the hook
- Never allow the sling to bear against the latch

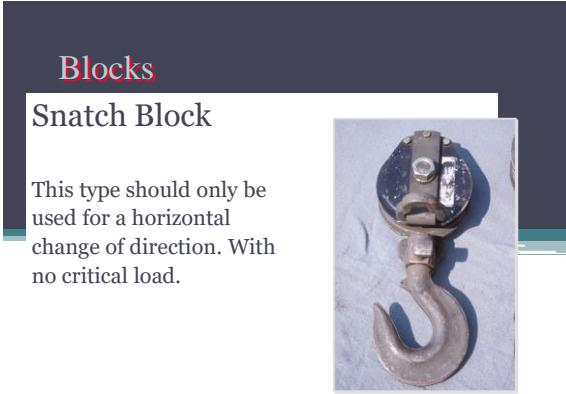
34



Hooks

These hooks should be removed from service

35

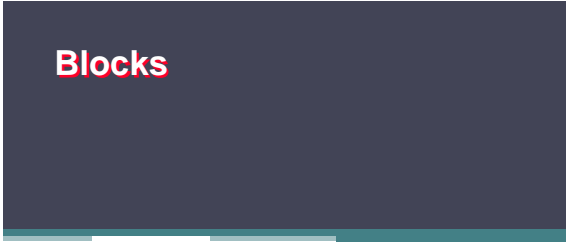


Blocks

Snatch Block

This type should only be used for a horizontal change of direction. With no critical load.

36



Blocks

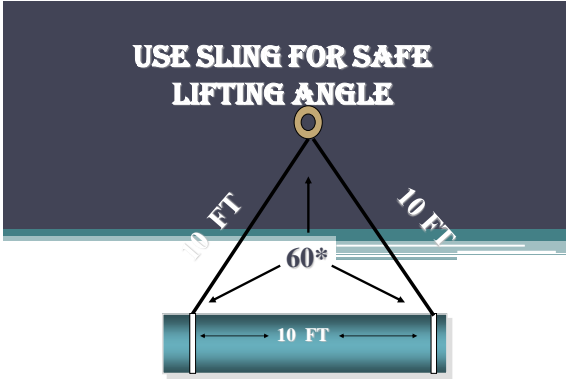
A Snatch Block With Swivel Shackle



37

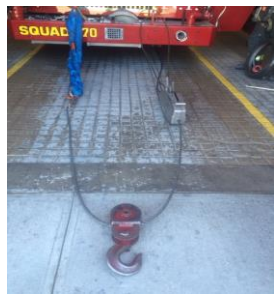
Hands-on Evolutions

38



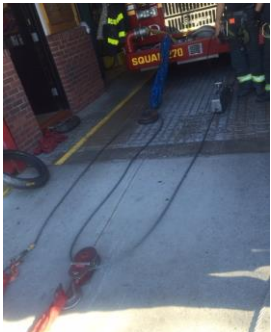
39

Griphoist with Mechanical Advantage



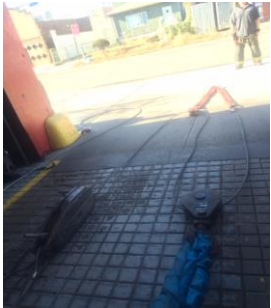
40

Griphoist with Mechanical Advantage



41

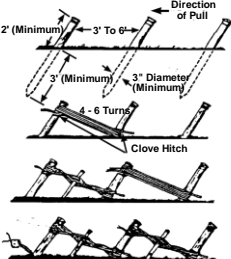
Griphoist with Mechanical Advantage



42

Picket Holdfast

- 1) Drive Pickets (Steel or Wood) Into Ground 15" Minimum From Vertical
- 2) Lash Pickets Together, Starting At Top Of First Picket
- 3) Twist Rope With Rack Stick, Then Drive Stick Into Ground
- 4) Completed Picket Holdfast



43

Controlled Roll